



## Japanese Black Beef Sukiyaki Set 3000

九州産 黒毛和牛のすきやき御膳  
A hearty set made with generous amounts of Japanese black beef.  
●Japanese Black Beef Sukiyaki ●Egg  
●Japanese-style Pickles ●Rice  
+Add Sukiyaki Japanese Black Beef 100g ¥1500



## Stone-Grilled Hitsumabushi 3000 - Eel and Rice Bowl -

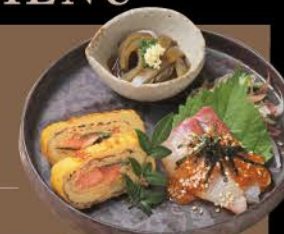
鰻の石焼ひつまぶし  
Mix the flavorful eel with the sweet sauce inside a piping-hot stone grill to bring out the rich flavors even more. Add condiments and dashi-broth to enjoy.  
●Eel and Rice Bowl ●Dashi-Broth ●Japanese-style Pickles  
●Condiments Wasabi and Nori-Seaweed

## SET MENU

### 3 Types of Starters

先付3種セット + 600

- Seasonal Dishes
  - Greater Amberjack Dressed in Sesame Sauce
  - Rolled Japanese Omelet with Spicy Cod Roe
- 季節の一品 / カンパチの胡麻和え / 明太だし巻き玉子



### Drink Set ドリンクセット + 250

Choose one 1杯お選びください。

- Coffee コーヒー Hot / Iced
- Green Tea 緑茶 Hot / Iced
- Black Oolong Tea 黒烏龍茶 Hot / Iced
- Orange Juice オレンジジュース
- Cola コーラ

## 御飯 RICE

- ◆ Eel Rice Ball **To-Go OK** 650  
鰻むすび  
A special rice ball topped with a fluffy piece of steamed eel.
- ◆ Kashiwa-Meshi 380  
-Chicken Rice with Various Ingredients-  
かしわ御飯
- ◆ Spicy Cod Roe Rice 420  
辛子明太子御飯
- ◆ Plain Rice 200  
白御飯



## 一品 SIGNATURE DISHES

- ◆ 3 Types of Famous Fukuoka Starters 600  
福岡名物 先付3種
- ◆ Rolled Japanese Omelet with Spicy Cod Roe 820  
明太だし巻き玉子
- ◆ French Fries **To-Go OK** 600  
フライドポテト
- ◆ Chicken Tempura **To-Go OK** 780  
とり天



## うどん UDON NOODLES

### Iinoji Udon 1600

いい乃じうどん  
Fried Bean Curd / Dried Sea Lettuce  
Japanese Mustards / Scallions  
Rolled Japanese Omelet with Spicy Cod Roe



**Shinoda Udon 1200**  
しのだうどん  
Fried Bean Curd / Scallions



**Chicken Tempura Udon 1250**  
とり天うどん  
Chicken Tempura / Scallions / Seaweed  
Grated Daikon-Radish / Minced Ginger



**Meat Udon 1500**  
肉うどん  
Braised Beef / Scallions / Minced Ginger



**Egg with Spicy Cod Roe 1500 over Udon**  
明太玉子とじうどん  
Egg / Spicy Cod Roe / Scallions  
Mitsuba (Japanese Parsley) / Minced Ginger



**Chilled Udon 1250**  
with Ume-Plum and Grated Daikon-Radish  
冷やし梅おろしうどん  
Ume-Plum / Grated Daikon-Radish  
Green Shiso / Okra / Sesame



**Kid's Udon 600**  
with Jelly & Orange Juice  
お子様うどん [ゼリー&オレンジジュース付]  
Fried Bean Curd / Fish Cake / Seaweed

## SET MENU

### Choice of Rice Set

選べるご飯セット + 350

Please choose one 1種お選びください。



**Kashiwa-Meshi** かしわ御飯  
-Chicken Rice with Various Ingredients-



**Spicy Cod Roe Rice** 辛子明太子御飯

### Drink Set ドリンクセット + 250

Choose one 1杯お選びください。

- Coffee コーヒー Hot / Iced
- Green Tea 緑茶 Hot / Iced
- Black Oolong Tea 黒烏龍茶 Hot / Iced
- Orange Juice オレンジジュース
- Cola コーラ

## 甘味 DESSERT



**Yame Matcha Tiramisu 750**  
八女抹茶の升ティラミス



**Warabi-Mochi 500**  
-Bracken-starch dumpling-  
わらび餅

- ◆ Soft Serve Ice Cream **To-Go OK** ALL 450  
Yame-Matcha/Vanilla/Mix  
ソフトクリーム 〈八女抹茶・バニラ・ミックス〉

\* All prices include consumption tax. \* Picture is a depiction.



## ALCOHOL

### BEER

#### BOTTLE BEER

◆ **KIRIN ICHIBAN** (334ml) 690  
キリン 一番搾り 小瓶

◆ **KIRIN ICHIBAN** (500ml) 860  
キリン 一番搾り 中瓶

#### NON-ALCOHOL BEER

◆ **KIRIN Green's Free** 640  
キリン グリーンスフリー

### HIGH BALL & CHU-HI

◆ **Whisky Highball** 640  
ハイボール

◆ **Ume-Plum Chu-hi** 650  
太宰府梅干し酎ハイ

◆ **Green Tea Chu-hi** 650  
八女緑茶ハイ

◆ **Crazy Lemon Chu-hi** 690  
クレイジーレモン酎ハイ

### 梅酒・焼酎 PLUM LIQUOR & SHOCHU

〈 on the Rocks / with Soda / Water Spirit / with Warm Water 〉  
ロック ソーダ割り 水割り お湯割り

#### PLUM LIQUOR

◆ **Kochi no Ume** 680  
太宰府梅酒 東風の梅  
*Ume-plums from Dazaifu are marinated in Shochu*

#### BARLEY SHOCHU

◆ **Tsukushi Kuro** Glass 550  
つくし 黒 [筑後市 西吉田酒造]

#### SWEET POTATO SHOCHU

◆ **Morris** Glass 800  
モーリス [鹿児島]  
*Glorious like a flower, and sweet in flavor.  
Authentic potato-based Shochu with a great flavor profile.*

#### SHOCHU COCKTAIL

◆ **Morris Water** 820  
MORRISウォーター  
*The freshness from the tonic and lime.*

## NON-ALCOHOL

### 八女茶 -YAME TEA-



*Mainly farmed and produced in the city of Yame, Fukuoka Prefecture,  
an area famous for its Gyokuro (refined green tea).  
Tea characterized by its umami and non-bitter sweetness*

### GREEN TEA & TEA LATTE

#### PREMIUM GREEN TEA

◆ **Yame Gyokuro**  
**Green Tea** 〈Hot / Iced〉 550  
八女緑茶 玉露

◆ **Roasted Green**  
**Tea Latte** 〈Hot / Iced〉 630  
ほうじ茶ラテ

### JAPANESE BLACK TEA

◆ **Yabe Black Tea** 〈Hot / Iced〉 550  
矢部紅茶  
*Organic Japanese black tea,  
nurtured in the high-altitude mountains.  
Characterized by its robust taste and sweetness.*

### VINEGAR CIDER 庄分酢ビネガーサイダー

*Cider made by a vinegar maker  
with more than 300 years of history*

◆ **Kyoho Grape Vinegar** 巨峰酢 680  
*Kyoho grapes (sourced from Fukuoka) are made into cider.  
Just like champagne, but non-alcoholic.*

◆ **Homemade honey lemonade** 740  
自家製はちみつレモネード

◆ **Virgin Fuzzy Navel** 700  
バージンファジーネーブル  
*Peach juice and orange juice*

### SOFT DRINK

◆ **Coffee** 〈Hot / Iced〉 580  
氷温熟成コーヒー Hot / Iced

◆ **Coca-Cola** 550  
コカ・コーラ

◆ **Organic Orange Juice** 580  
有機オレンジジュース

◆ **Black Oolong Tea** 〈Hot / Iced〉 550  
黒烏龍茶 Hot / Iced